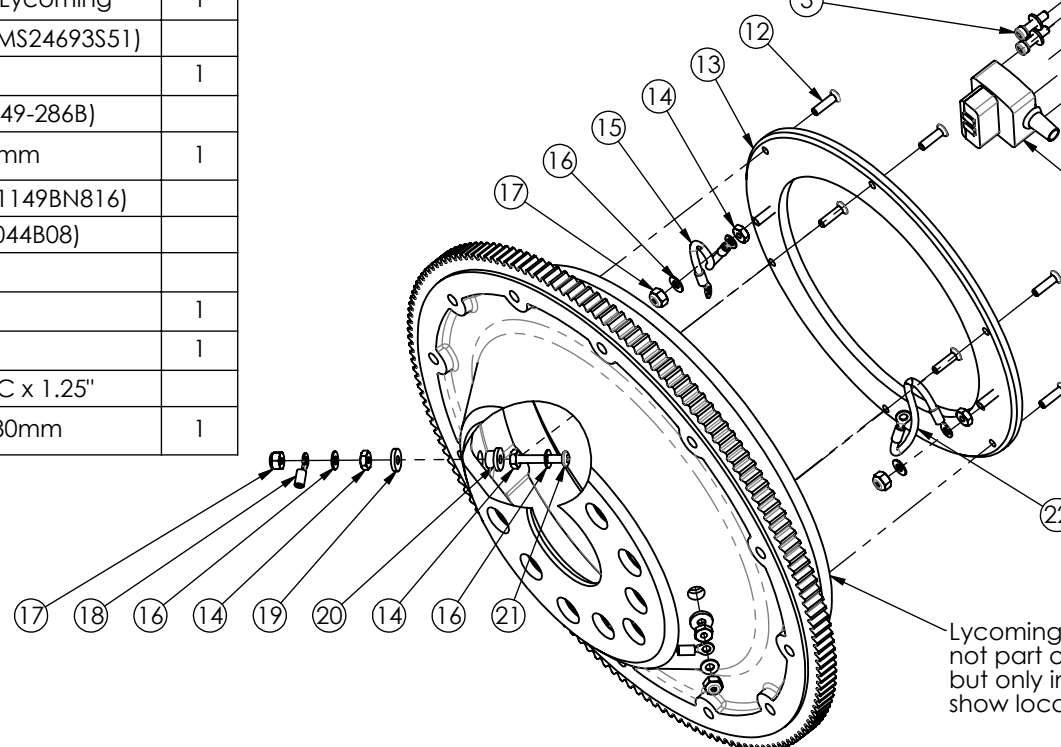
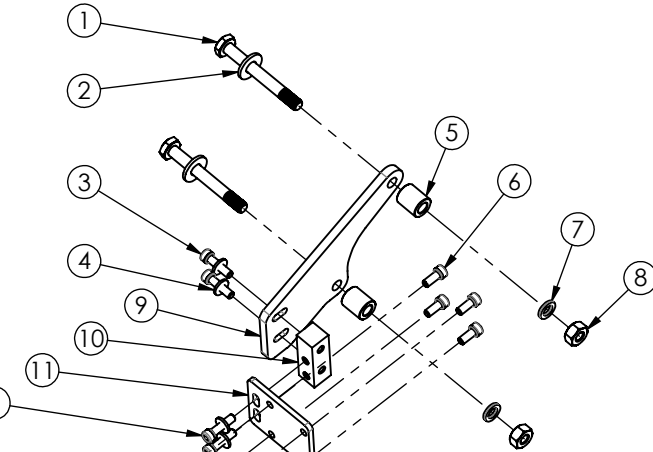
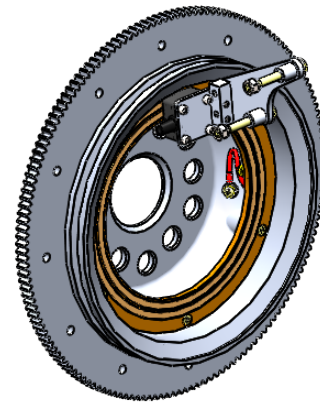



ITEM NO.	QTY.	PART NO. ASSY NO.	DESCRIPTION	REV
1	2	P0887-21	AN Bolt, 1/4 UNF x 2 1/8" (AN4-21)	
2	2	P0889	Washer AN960 - 1/4" x 0.63	
3	4	P0865	Cap Screw, 8-32UNC x 5/8" SS	
4	4	P0163	Washer AN960 #8 x 0.032	
5	2	P0875	Sensor Brush Plate Spacer	1
6	4	P0863	Cap Screw, 8-32UNC x 3/8" SS	
7	2	P0860	Nord-Lock Washer, M6	
8	2	P0888	Hex Nut 1/4 UNF	
9	1	P0878	Sensor Brush Mounting bracket Lycoming	1
10	1	P0876	Sensor Brush Plate Connecting Block	1
11	1	P0877	Sensor Brush Block Cover Plate-Lycoming	1
12	6	P0161	Csk Hd Screw, 8-32UNC x 5/8" (MS24693S51)	
13	1	A0858	Slipring Assy-Lycoming	1
14	6	P0233	MC Nut, Brass, 8-32UNC (MS35649-286B)	
15	1	A0341R80	Link Wire Assy lycoming-Red 80mm	1
16	6	P0232	Washer, brass, #8 x 0.032" (NAS1149BN816)	
17	4	P0235	Locknut, brass, 8-32UNC (MS21044B08)	
18	2	P0234	PIDG Ring Tongue Terminal, #8	
19	2	P0841	Lycoming Isolating Washer	1
20	2	P0840	Lycoming Isolating Bush	1
21	2	P0842	Pan Head Screw, Brass, 8-32UNC x 1.25"	
22	1	A0341B80	Link Wire Assy Lycoming-Black 80mm	1



Sensor Brush Assy is not part of this assembly but only included to show location.

Lycoming Ring Gear is not part of this assembly but only included to show location.

ASSY FILE: Slipring Assy Complete-Lycoming		REV: 1			<b>BOM</b>	 Airmaster Propellers Ltd Ph: +64 9 833 1794 20 Haszard Rd, Massey Fax: +64 9 833 1796 PO Box 374, Kumeu Email: support@propellor.com Auckland, New Zealand Web: www.propellor.com
DRG FILE: AR-LS Lycoming Slipring Assy BOM						
ASSY NO: <b>AR-LS</b>					<b>COPYRIGHT RESERVED ©</b>	The information contained in this drawing is the sole property of Airmaster. Any reproduction in part or whole without written permission of Airmaster is prohibited.
DESCRIPTION: <b>Lycoming Slipring Complete Assy</b>		1	Original	11/11/15		
	REV		DESCRIPTION	DATE		